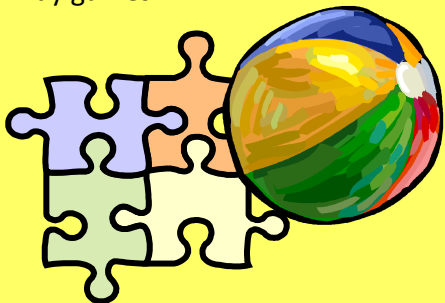


## Ways to Promote Your Child's Speech and Language Development:

- Be a good speech model. Don't use baby talk.
- Look at your child when he/she is speaking.
- Pronounce words clearly, slowly and correctly for your child to hear.
- Let your child watch your face, lips and tongue as you say sounds that are difficult for your child to say.
- Praise your child's efforts to speak more clearly.
- Repeat new words over and over.
- Talk about things you do and places you go.
- Read to your child daily.
- Tell stories together.
- Recite nursery rhymes and sing songs.
- Pretend with your child.
- Play games



### PSLC Staff

The **Speech Language Pathologist** provides direct speech and language intervention to students.

### The **Special Education Resource**

**Teacher** provides academic programming and direct instruction to students.

The **Educational Assistant** (under direction of the SLP and SERT) provides daily support to the students to reinforce speech, language and academic goals.



If you would like information regarding the Primary Speech and Language Centre, please contact the SLP assigned to your school or contact:

Julie Byrne, Manager Speech Language Services

Telephone: (905) 525-2930 Ext. 2889

## Hamilton Wentworth Catholic District School Board



## Primary Speech and Language Centre



Each Belongs

Children with a history of speech and/or language difficulties are at a high risk for developing reading, writing and spelling difficulties.

The **Primary Speech and language Centre (PSLC)** provides service to children in the HWCDSB who have a severe speech and/or expressive language difficulty in the absence of any primary medical or cognitive condition, which is the basis for the child's communication exceptionality. The program provides ongoing assessment and a plan of remediation for students. The PSLC is located at a designated elementary school.



Most students with speech and language difficulties are identified in Junior Kindergarten through informal consultation that is provided by the Board's team of Speech Language Pathologists (SLPs). A student may also be identified by an SLP from a community agency who has had involvement with the student prior to school entry. In cases where the school has concerns about a student's speech and language development, the School Resource Team (SRT) should request permission from the parents/guardians to make a referral to Student Services for a consultation/assessment from a SLP.

### Criteria for Placement in the PSLC:

The student...

- is between SK and Grade 3
- has receptive language skills within the average range\*
- has a moderate to severe speech and/or expressive language impairment\*
- has average nonverbal cognitive abilities (25th percentile or above)
- exhibits behaviour that is conducive to therapy\*

**\*As determined by an SLP from the HWCDSB**

### Procedure:

- A SLP from the Board completes an assessment/consultation
- A psycho-educational assessment is recommended if the student meets the speech and language criteria for the PSLC
- If all criteria are met, the in-school Identification Placement and Review Committee (IPRC) meets with parents/guardians to determine the student's exceptionality and recommends placement for the student
- If placement in the PSLC is recommended and parents/guardians agree, the Principal and Special Education Resource Teacher complete and System IPRC package
- Parents are invited to visit the PSLC

### Presentation to the System IPRC:

- The System IPRC is a committee which reviews the information gathered by the school team.
- The System IPRC determines the student's identification and placement.



### Placement in the PSLC:

- Placement in the PSLC is generally for 10 school months.
- The student is registered at the designated school and integrated into a regular classroom at his/her grade level.
- Transportation to the PSLC and home is provided by the School Board.
- The student's placement is reviewed by the System IPRC within one year.
- Entry to the PSLC occurs at natural breaks in the school year (September, January, March).

